

PERMANENT STORMWATER MANAGEMENT SYSTEM IS DESIGNED TO MEET THE REQUIREMENTS OF NPDES GENERAL STORMWATER PERMIT FOR CONSTRUCTION ACTIVITY.

NEW (DISTURBED) SITE INFORMATION:	71.04 AC
WATER QUALITY VOLUME (WQV):	1.37 AF
PERMANENT MANAGEMENT SYSTEM:	WQV TREATED
PONDS	1.37 AF
TOTAL WQV TREATED	1.37 AF

EROSION PREVENTION MEASURES AND TIMING:
 THE CONTRACTOR IS RESPONSIBLE FOR ALL EROSION PREVENTION MEASURES FOR THE PROJECT. EROSION PREVENTION MEASURES SHOWN ON PLANS ARE THE ABSOLUTE MINIMUM REQUIREMENTS. THE CONTRACTOR SHALL IMPLEMENT ADDITIONAL EROSION PREVENTION MEASURES AS NECESSARY TO PROPERLY MANAGE THE PROJECT AREA.
 THE CONTRACTOR SHALL PLAN AND IMPLEMENT APPROPRIATE CONSTRUCTION PRACTICES AND CONSTRUCTION PHASING TO MINIMIZE EROSION AND RETAIN VEGETATION WHENEVER POSSIBLE.
 THE CONTRACTOR SHALL DELINEATE AREAS NOT TO BE DISTURBED AND/OR TO BE PROTECTED BEFORE CONSTRUCTION BEGINS ON THE SITE.
 IN NO CASE SHALL ANY EXPOSED SOILS IMMEDIATELY TO LIMIT SOIL EROSION. MORE THAN 14 DAYS WITHOUT PROVIDING TEMPORARY OR PERMANENT STABILIZATION.
 DRAINAGE PATHS, DITCHES, AND/OR SWALES SHALL HAVE TEMPORARY OR PERMANENT STABILIZATION WITHIN 24 HOURS OF CONNECTING TO A SURFACE WATER OR 24 HOURS AFTER CEASING CONSTRUCTION ACTIVITY IN THE DITCH/SWALE HAS TEMPORARILY OR PERMANENTLY CEASED.
 THE CONTRACTOR SHALL IMPLEMENT STORMWATER CONVEYANCE CHANNELS WHEN APPROPRIATE TO ROUTE WATER AROUND UNSTABILIZED AREAS ON SITE TO REDUCE EROSION.
 THE CONTRACTOR SHALL IMPLEMENT EROSION CONTROL BMPs AND VELOCITY DISSIPATION DEVICES ALONG CONSTRUCTED STORMWATER CONVEYANCE CHANNELS AND OUTLETS.
 THE CONTRACTOR SHALL STABILIZE TEMPORARY AND/OR PERMANENT DRAINAGE DITCHES OR SWALES WITHIN 200 LINEAL FEET FROM PROPERTY EDGE, OR DISCHARGE POINT(S) WITHIN 24 HOURS AFTER CONNECTING TO A SURFACE WATER OR PROPERTY EDGE.
 TEMPORARY OR PERMANENT DITCHES OR SWALES USED AS A SEDIMENT CONTAINMENT SYSTEM DURING CONSTRUCTION MUST BE STABILIZED WITHIN 24 HOURS AFTER NO LONGER BEING USED AS A SEDIMENT CONTAINMENT SYSTEM.
 THE CONTRACTOR SHALL NOT UTILIZE HYDROMULCH, TACKIFIER, POLYACRYLAMIDE OR SIMILAR EROSION PREVENTION PRACTICES AS A FORM OF STABILIZATION FOR TEMPORARY OR PERMANENT DRAINAGE DITCHES OR SWALES.
 THE CONTRACTOR SHALL ENSURE PIPE OUTLETS HAVE TEMPORARY OR PERMANENT ENERGY DISSIPATION WITHIN 24 HOURS OF CONNECTION TO A SURFACE WATER.
 THE CONTRACTOR SHALL DIRECT DISCHARGES FROM BMPs TO VEGETATED AREAS TO INCREASE SEDIMENT REMOVAL AND MAXIMIZE STORMWATER INFILTRATION. VELOCITY DISSIPATION DEVICES MUST BE USED TO PREVENT EROSION WHEN DIRECTING STORMWATER TO VEGETATED AREAS.

SEDIMENT CONTROL MEASURES AND TIMING:
 THE CONTRACTOR SHALL ENSURE SEDIMENT CONTROL PRACTICES REMOVED OR ADJUSTED FOR SHORT-TERM ACTIVITIES BE RE-INSTALLED IMMEDIATELY AFTER THE SHORT-TERM ACTIVITY HAS BEEN COMPLETED. SEDIMENT CONTROL PRACTICES MUST BE RE-INSTALLED BEFORE THE NEXT PRECIPITATION EVENT EVEN IF THE SHORT-TERM ACTIVITY IS NOT COMPLETE.
 THE CONTRACTOR SHALL ENSURE STORM DRAIN INLETS AND CULVERT INLETS ARE PROTECTED BY APPROPRIATE BMPs DURING CONSTRUCTION UNTIL ALL SOURCES WITH POTENTIAL FOR DISCHARGING TO THE INLET HAS BEEN STABILIZED.
 THE CONTRACTOR SHALL ENSURE STOCK PILES ARE PROVIDED WITH AN EFFECTIVE SEDIMENT PERIMETER CONTROL, AND STOCK PILES SHALL NOT BE PLACED IN ANY TYPE OF SURFACE WATER OR NATURAL BUFFER.
 THE CONTRACTOR SHALL INSTALL PERIMETER CONTROL AROUND ALL STAGING AREAS, BORROW PITS, AND AREAS CONSIDERED ENVIRONMENTALLY SENSITIVE.
 THE CONTRACTOR SHALL ENSURE VEHICLE TRACKING BE MINIMIZED WITH EFFECTIVE BMPs. WHERE THE BMPs FAIL TO PREVENT SEDIMENT FROM TRACKING ONTO STREETS THE CONTRACTOR SHALL CONDUCT STREET SWEEPING TO REMOVE ALL TRACKED SEDIMENT.
 THE CONTRACTOR SHALL IMPLEMENT CONSTRUCTION PRACTICES TO MINIMIZE SOIL COMPACTION.
 THE CONTRACTOR SHALL ENSURE ALL CONSTRUCTION ACTIVITY REMAIN WITHIN PROJECT LIMITS.
 THE CONTRACTOR SHALL NOT UTILIZE SEDIMENT CONTROL CHEMICALS ON SITE.

INFILTRATION AREAS SHALL BE INSPECTED FOR SIGNS OF SEDIMENTATION AND COMPACTION.

EROSION PREVENTION BMP SUMMARY:
 SEE EROSION CONTROL PLAN SHEET FOR TYPE, LOCATION, AND QUANTITY OF EROSION PREVENTION BMPs.

SEDIMENT CONTROL BMP SUMMARY:
 SEE EROSION CONTROL PLAN SHEETS FOR TYPE, LOCATION, AND QUANTITY OF SEDIMENT CONTROL BMPs.

DEWATERING AND BASIN DRAINING ACTIVITIES:
 THE CONTRACTOR IS RESPONSIBLE FOR ADHERING TO ALL DEWATERING AND SURFACE DRAINAGE REGULATIONS.
 WATER FROM DEWATERING ACTIVITIES SHALL DISCHARGE TO A TEMPORARY AND/OR PERMANENT SEDIMENT BASIN.
 IF WATER CANNOT BE DISCHARGED TO A SEDIMENTATION BASIN, IT SHALL BE TREATED WITH OTHER APPROPRIATE BMPs, TO EFFECTIVELY REMOVE SEDIMENT.
 DISCHARGE THAT CONTAINS OIL OR GREASE MUST BE TREATED WITH AN OIL-WATER SEPARATOR OR SUITABLE FILTRATION DEVICE PRIOR TO DISCHARGE.

DISCHARGE POINTS SHALL BE PROTECTED FROM EROSION AND SCOUR.
 DISCHARGE WATER SHALL BE DISPERSED OVER AN ACCEPTED ENERGY DISSIPATION MEASURE.
 WATER FROM DEWATERING SHALL BE DISCHARGED IN A MANNER THAT DOES NOT CAUSE NUISANCE CONDITIONS, EROSION, OR INUNDATION OF WETLANDS.
 BACKWASH WATER USED FOR FILTERING SHALL BE HAULED AWAY FOR DISPOSAL, RETURNED TO THE SOURCE, OR REUSED. THE CONTRACTOR SHALL REPLACE AND CLEAN FILTER MEDIAS USED IN DEWATERING DEVICES WHEN REQUIRED TO MAINTAIN ADEQUATE FUNCTION.

INSPECTION AND MAINTENANCE:
 ALL INSPECTIONS, MAINTENANCE, REPAIRS, REPLACEMENTS, AND REMOVAL OF BMPs IS TO BE CONSIDERED INCIDENTAL TO THE BMP BID ITEMS.
 THE CONTRACTOR IS RESPONSIBLE FOR COMPLETING SITE INSPECTIONS, AND BMP MAINTENANCE TO ENSURE COMPLIANCE WITH THE PERMIT REQUIREMENTS.
 THE CONTRACTOR SHALL INSPECT THE CONSTRUCTION SITE ONCE EVERY 7 DAYS DURING ACTIVE CONSTRUCTION AND WITHIN 24 HOURS AFTER A RAINFALL EVENT GREATER THAN 0.5 INCHES IN 24 HOURS.

THE CONTRACTOR SHALL DOCUMENT A WRITTEN SUMMARY OF ALL INSPECTIONS AND MAINTENANCE ACTIVITIES COMPLETED WITHIN 24 HOURS OF OCCURRENCE. RECORDS OF EACH ACTIVITY SHALL INCLUDE THE FOLLOWING:
 - DATE AND TIME OF INSPECTIONS
 - NAME OF PERSON(S) CONDUCTING INSPECTION
 - FINDINGS AND RECOMMENDATIONS FOR CORRECTIVE ACTIONS IF NECESSARY;
 - CORRECTIVE ACTIONS TAKEN;
 - POINTS OF DISCHARGE OBSERVED DURING INSPECTION AND DESCRIPTION OF THE DISCHARGE
 - AMENDMENTS MADE TO THE SWPPP.

THE CONTRACTOR SHALL SUBMIT A COPY OF THE WRITTEN INSPECTIONS TO THE ENGINEER AND OWNER ON A MONTHLY BASIS. IF MONTHLY INSPECTION REPORTS ARE NOT SUBMITTED, MONTHLY PAYMENTS MAY BE HELD.
 THE CONTRACTOR SHALL KEEP THE SWPPP, ALL INSPECTION REPORTS, AND AMENDMENTS ON-SITE. THE CONTRACTOR SHALL DESIGNATE A SPECIFIC ON-SITE LOCATION TO KEEP THE RECORDS.
 THE CONTRACTOR IS RESPONSIBLE FOR THE OPERATION AND MAINTENANCE OF TEMPORARY AND PERMANENT WATER QUALITY BMPs, AS WELL AS EROSION AND SEDIMENT CONTROL BMPs.

THE CONTRACTOR SHALL INSPECT EROSION PREVENTION AND SEDIMENTATION CONTROL BMPs TO ENSURE INTEGRITY AND EFFECTIVENESS. ALL NON-FUNCTIONAL BMPs SHALL BE REPAIRED, REPLACED, OR REMOVED IMMEDIATELY. THE CONTRACTOR SHALL INVESTIGATE AND COMPLY WITH THE FOLLOWING INSPECTION AND MAINTENANCE REQUIREMENTS:
 PERIMETER CONTROL DEVICES, INCLUDING SILT FENCES, SHALL BE REPAIRED OR REPLACED, WHEN THE DEPTH OF SEDIMENT COLLECTED AT THE BASE EXCEEDS THE STORAGE VOLUME.
 TEMPORARY AND PERMANENT SEDIMENT BASINS SHALL BE DRAINED, AND THE SEDIMENT REMOVED DRAINAGE AND REMOVAL MUST BE COMPLETED WITHIN 72 HOURS OF DISCOVERY.

SURFACE WATERS, INCLUDING DRAINAGE DITCHES AND CONVEYANCE SYSTEMS, MUST BE INSPECTED FOR EVIDENCE OF EROSION AND SEDIMENT DEPOSITION. THE CONTRACTOR SHALL REMOVE ALL DELTAS AND SEDIMENT DEPOSITED IN SURFACE WATERS, INCLUDING DRAINAGE WAYS, CATCH BASINS, AND OTHER DRAINAGE SYSTEMS. THE CONTRACTOR SHALL RE-STABILIZE AND TAKE PLACE WITHIN 72 HOURS OF DISCOVERY UNLESS PRECLUDED BY LEGAL, REGULATORY, OR PHYSICAL CONSTRAINTS. THE CONTRACTOR IS RESPONSIBLE FOR CONTACTING ALL LOCAL, REGIONAL, STATE AND FEDERAL AUTHORITIES AND OBTAIN ANY APPLICABLE PERMITS, PRIOR TO CONDUCTING ANY WORK IN SURFACE WATERS.

CONSTRUCTION SITE VEHICLE EXIT LOCATIONS SHALL BE INSPECTED DAILY FOR EVIDENCE OF SEDIMENT TRACKING ONTO PAVED SURFACES. TRACKED SEDIMENT MUST BE REMOVED FROM ALL PAVED SURFACES WITHIN 24 HOURS OF DISCOVERY.
 IF SEDIMENT ESCAPES THE CONSTRUCTION SITE, OFF-SITE ACCUMULATIONS OF SEDIMENT MUST BE REMOVED IN A MANNER AND AT A FREQUENCY SUFFICIENT TO MINIMIZE OFF-SITE IMPACTS.

POLLUTION PREVENTION MANAGEMENT MEASURES:
 THE CONTRACTOR SHALL BE RESPONSIBLE FOR ALL POLLUTION PREVENTION MANAGEMENT MEASURES, UNLESS OTHERWISE NOTED.

ALL POLLUTION PREVENTION MEASURES ARE CONSIDERED INCIDENTAL TO THE MOBILIZATION BID ITEM. THE CONTRACTOR IS RESPONSIBLE FOR INFORMING ALL VISITORS AND/OR PERSONNEL ON-SITE OF THE POLLUTION PREVENTION MANAGEMENT MEASURES. POLLUTION PREVENTION MANAGEMENT MEASURES INCLUDE BUT ARE NOT LIMITED TO THE FOLLOWING:
 THE CONTRACTOR IS RESPONSIBLE FOR THE PROPER DISPOSAL OF ALL HAZARDOUS MATERIALS, SOLID WASTE, AND PRODUCTS ON-SITE.
 THE CONTRACTOR SHALL ENSURE BUILDING PRODUCTS THAT HAVE THE POTENTIAL TO LEACH POLLUTANTS ARE KEPT UNDER COVER TO PREVENT THE DISCHARGE OF POLLUTANTS.
 THE CONTRACTOR SHALL ENSURE PESTICIDES, HERBICIDES, INSECTICIDES, FERTILIZERS, TREATMENT CHEMICALS, AND LANDSCAPE MATERIALS ARE COVERED TO PREVENT THE DISCHARGE OF POLLUTANTS.
 THE CONTRACTOR SHALL ENSURE HAZARDOUS MATERIALS AND TOXIC WASTE IS PROPERLY STORED IN SEALED CONTAINERS TO PREVENT SPILLS, LEAKS, OR OTHER DISCHARGE, STORAGE, AND DISPOSAL OF HAZARDOUS WASTE OR HAZARDOUS MATERIALS MUST BE IN COMPLIANCE WITH NPDES PERMIT AND NEBRASKA DEPARTMENT OF ENVIRONMENTAL QUALITY.

THE CONTRACTOR SHALL ENSURE ASPHALT SUBSTANCES USED ON-SITE SHALL BE APPLIED IN ACCORDANCE WITH MANUFACTURERS' RECOMMENDATIONS.
 THE CONTRACTOR SHALL ENSURE PAINT CONTAINERS AND CURING COMPOUNDS SHALL BE TIGHTLY SEALED AND STORED WHEN NOT REQUIRED FOR USE. EXCESS PAINT AND/OR CURING COMPOUNDS SHALL NOT BE DISCHARGED INTO THE STORM SEWER SYSTEM AND SHALL BE PROPERLY DISPOSED OF ACCORDING TO MANUFACTURER'S INSTRUCTION.
 THE CONTRACTOR SHALL ENSURE SOLID WASTE BE STORED, COLLECTED AND DISPOSED OF PROPERLY IN COMPLIANCE WITH NPDES PERMIT AND NEBRASKA DEPARTMENT OF ENVIRONMENTAL QUALITY.

THE CONTRACTOR SHALL ENSURE POTABLE TOILETS ARE POSITIONED SO THAT THEY ARE SECURE AND WILL NOT BE TIPPED OR KNOCKED OVER. SANITARY WASTE MUST BE DISPOSED OF PROPERLY IN ACCORDANCE WITH NPDES PERMIT AND NEBRASKA DEPARTMENT OF ENVIRONMENTAL QUALITY.
 THE CONTRACTOR SHALL MONITOR ALL VEHICLES ON-SITE FOR LEAKS AND RECEIVE REGULAR PREVENTION MAINTENANCE TO REDUCE THE CHANCE OF LEAKAGE.
 EXTERNAL WASHINGS OF TRUCKS AND OTHER CONSTRUCTION VEHICLES AND ENGINE DEGREASING ARE PROHIBITED AT THE CONSTRUCTION SITE.

THE CONTRACTOR SHALL ENSURE WASHOUT WASTE MUST CONTACT THE GROUND AND BE PROPERLY DISPOSED OF IN COMPLIANCE WITH NEBRASKA DEPARTMENT OF ENVIRONMENTAL QUALITY RULES.
 THE CONTRACTOR SHALL INCLUDE SPILL KITS WITH ALL FUELING SOURCES AND MAINTENANCE ACTIVITIES. SECONDARY CONTAINMENT MEASURES SHALL BE INSTALLED AND MAINTAINED BY THE CONTRACTOR.
 THE CONTRACTOR SHALL ENSURE SPILLS ARE CONTAINED AND CLEANED UP IMMEDIATELY UPON DISCOVERY. SPILLS LARGE ENOUGH TO REACH THE STORM WATER CONVEYANCE SYSTEM SHALL BE REPORTED.

FINAL STABILIZATION:
 THE CONTRACTOR IS RESPONSIBLE FOR ENSURING FINAL STABILIZATION OF THE ENTIRE SITE. FINAL STABILIZATION INCLUDES BUT IS NOT LIMITED TO THE FOLLOWING:
 ALL SOIL DISTURBING ACTIVITIES HAVE BEEN COMPLETED.
 ALL EXPOSED SOILS HAVE BEEN UNIFORMLY STABILIZED WITH AT LEAST 70% VEGETATION COVERAGE.
 ALL DRAINAGE DITCHES, PONDS, AND ALL STORM WATER CONVEYANCE SYSTEMS HAVE BEEN DESIGNED.
 ALL DRAINAGE DITCHES, PONDS, AND ALL STORM WATER CONVEYANCE SYSTEMS HAVE BEEN CLEARED OF SEDIMENT AND STABILIZED WITH PERMANENT COVER TO PRECLUDE EROSION.
 ALL TEMPORARY BMPs HAVE BEEN REMOVED AND PROPERLY DISPOSED OF.

MAINTENANCE SCHEDULE
 THE FOLLOWING MAINTENANCE SCHEDULE HAS BEEN PROVIDED. THE INSPECTOR MUST PERFORM THE MAINTENANCE ACTIVITIES DURING THE MAINTENANCE PERIODS. ADDITIONAL MAINTENANCE, OTHER THAN ALL OPERATOR/CONTRACTOR AND INSPECTOR MUST PERFORM THEIR RESPECTIVE DUTIES ON ALL BMPs THAT ARE NOT LISTED BELOW AS WELL.
 1. CONSTRUCTION ENTRANCE - THE ENTRANCE SHALL BE MAINTAINED IN A CONDITION WHICH WILL PREVENT TRACKING OR FLOW OF SEDIMENT ONTO PUBLIC RIGHTS-OF-WAY. THIS MAY REQUIRE PERIODIC TOP DRESSING WITH ADDITIONAL STONE OR THE WASHING AND REWORKING OF EXISTING STONE AS CONDITIONS DEMAND AND REPAIR AND/OR CLEANOUT OF ANY STRUCTURES USED TO TRAP SEDIMENT. ALL MATERIALS SPILLED, DROPPED, WASHED, OR TRACKED FROM VEHICLES ONTO ROADWAYS SHALL BE IMMEDIATELY CLEANED UP. MATERIALS SPILLED, WASHED, OR TRACKED FROM TRUCKS TO REMOVE MATERIALS DROPPED, WASHED, OR TRACKED ONTO ROADWAYS WILL NOT BE PERMITTED UNDER ANY CIRCUMSTANCES.

2. SILT FENCE - THE MAINTENANCE MEASURES ARE AS FOLLOWS: (2.1) SILT FENCES SHALL BE CHECKED IMMEDIATELY AFTER EACH RAINFALL EVENT. (2.2) SILT FENCES SHALL BE MAINTAINED AS FOLLOWS: (2.2.1) SILT FENCES SHALL BE PAID TO THE REPAIR OF DAMAGED SILT FENCE RESULTING FROM END RUNS AND UNDERCUTTING. (2.2.2) SHOULD THE FABRIC ON A SILT FENCE DECOMPOSE OR BECOME INEFFECTIVE PRIOR TO THE END OF THE EXPECTED USABLE LIFE AND THE BARRIER IS STILL NECESSARY, THE FABRIC SHOULD BE REPLACED IMMEDIATELY. (2.2.3) SEDIMENT DEPOSITION SHALL BE REMOVED WHEN THE FABRIC DEPOSITION BECOMES APPRECIABLE. (2.2.4) SEDIMENT DEPOSITION SHALL BE REMOVED AND (2.2.5) ANY SEDIMENT DEPOSITS REMAINING IN PLACE AFTER THE SILT FENCE IS NO LONGER REQUIRED SHALL BE DRESSED TO CONFORM TO THE EXISTING GRADE, PREPARED AND SEED.

BRIDGEPORT DEVELOPMENT
SAPPY COUNTY,
NEBRASKA

FILE NO.
 GRAD137810

16
 18

SWPP PLAN

PHONE: 320.228.4300
 2200 25TH AVENUE SOUTH
 ST. CLOUD, MN 56302-1717
 www.sehinc.com

SEH

I HEREBY CERTIFY THAT THIS PLAN WAS PREPARED BY ME OR UNDER MY DIRECT SUPERVISION AND THAT I AM A LICENSED PROFESSIONAL ENGINEER IN THE STATE OF NEBRASKA.

RAYD B. JENKINS, P.E.
 License No. E-15844

Date: 10/29/2017

DESIGN TEAM	NO.	BY	DATE	REVISIONS
DRAWN BY: _____				
DESIGNED BY: _____				
CHECKED BY: _____				

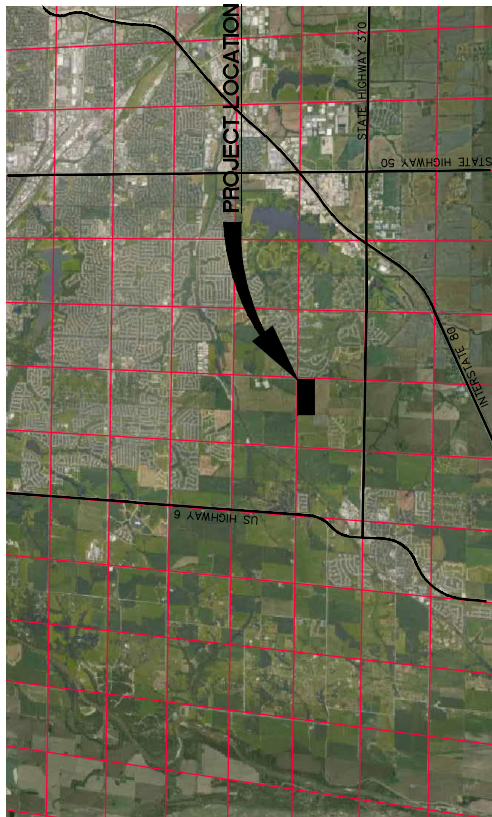
3. STORM DRAIN INLET PROTECTION – THE MAINTENANCE MEASURES ARE AS FOLLOWS: (1.1) STORM DRAIN INLET PROTECTION SHALL BE INSPECTED AFTER EACH RAIN AND REPAIRS MADE AS NECESSARY AND (3.2) STRUCTURES SHALL BE REMOVED AND THE AREA STABILIZED WHEN THE REMAINING DRAINAGE AREA HAS BEEN PROPERLY STABILIZED.
4. TEMPORARY DIVERSION DIKE – THE MEASURE SHALL BE INSPECTED AFTER EVERY STORM AND REPAIRS MADE TO THE DIKE. FLOW CHANNELS, OUTLET OR SEDIMENT TRAPPING FACILITIES NECESSARY, ONCE EVERY TWO WEEKS, WHETHER A STORM EVENT HAS OCCURRED OR NOT. THE MEASURE SHALL BE INSPECTED AND REPAIRS MADE IF NEEDED. DAMAGES CAUSED BY CONSTRUCTION TRAFFIC OR OTHER ACTIVITY MUST BE REPAIRED BEFORE THE END OF EACH WORKING DAY.
5. TEMPORARY FILL DIVERSION – SINCE THE PRACTICE IS TEMPORARY AND UNDER MOST SITUATIONS WILL BE COVERED THE NEXT WORKING DAY, THE MAINTENANCE REQUIRED SHOULD BE LOW. IF THE MEASURE IS NOT COVERED THE NEXT WORKING DAY, REPAIRS MADE TO THE MEASURE SHOULD BE MADE AT THE END OF EACH WORK DAY, AND REPAIRS MADE TO THE MEASURE SPECIFIC NEEDED. THE OPERATOR/CONTRACTOR SHOULD AVOID THE PLACEMENT OF ANY MATERIAL OVER THE STRUCTURE WHILE IT IS IN USE. CONSTRUCTION TRAFFIC SHOULD NOT BE PERMITTED TO CROSS THE DIVERSION.
6. TEMPORARY SEDIMENT TRAP – THE MAINTENANCE MEASURES ARE AS FOLLOWS: (6.1) SEDIMENT SHALL BE REMOVED AND THE TRAP RESTORED TO ITS ORIGINAL DIMENSIONS WHEN THE SEDIMENT HAS ACCUMULATED TO ONE HALF THE DESIGN VOLUME OF THE WET STORAGE. SEDIMENT REMOVAL FROM THE BASIN SHALL BE DEPOSITED IN A SUITABLE AREA, AND IN SUCH A MANNER THAT IT DOES NOT CAUSE EROSION OR SEDIMENTATION PROBLEMS; (6.2) AFTER STORMS, THE DIKE SHALL BE INSPECTED FOR DAMAGE AND REPAIRS MADE AS NECESSARY. THE DIKE SHALL BE CHECKED WITH SEDIMENT SHALL BE REMOVED AND CLEANED OR REPLACED; AND (6.3) THE STRUCTURE SHOULD BE CHECKED REGULARLY TO ENSURE THAT IT IS STRUCTURALLY SOUND AND HAS NOT BEEN DAMAGED BY EROSION OR CONSTRUCTION EQUIPMENT. THE HEIGHT OF THE STONE OUTLET SHOULD BE CHECKED TO ENSURE THAT ITS CENTER IS AT LEAST 1 FOOT BELOW THE TOP OF THE EMBANKMENT.
7. TEMPORARY SEDIMENT BASIN – THE BASIN EMBANKMENT SHOULD BE CHECKED REGULARLY TO ENSURE THAT IT IS STRUCTURALLY SOUND AND HAS NOT BEEN DAMAGED BY EROSION OR CONSTRUCTION EQUIPMENT. THE HEIGHT OF THE STONE OUTLET SHOULD BE CHECKED TO ENSURE THAT ITS CENTER IS AT LEAST 1 FOOT BELOW THE TOP OF THE EMBANKMENT. REPAIRS MADE TO THE BASIN SHALL BE DEPOSITED IN A SUITABLE AREA, AND IN SUCH A MANNER THAT IT DOES NOT CAUSE EROSION OR SEDIMENTATION PROBLEMS; (6.2) AFTER STORMS, THE DIKE SHALL BE INSPECTED FOR DAMAGE AND REPAIRS MADE AS NECESSARY. THE DIKE SHALL BE CHECKED WITH SEDIMENT SHALL BE REMOVED AND CLEANED OR REPLACED; AND (6.3) THE STRUCTURE SHOULD BE CHECKED REGULARLY TO ENSURE THAT IT IS STRUCTURALLY SOUND AND HAS NOT BEEN DAMAGED BY EROSION OR CONSTRUCTION EQUIPMENT. THE HEIGHT OF THE STONE OUTLET SHOULD BE CHECKED TO ENSURE THAT ITS CENTER IS AT LEAST 1 FOOT BELOW THE TOP OF THE EMBANKMENT.
8. TEMPORARY SEEDING – AREAS WHICH FAIL TO ESTABLISH VEGETATIVE COVER ADEQUATE TO PREVENT RILL EROSION WILL BE RE-SEED AS SOON AS SUCH AREAS ARE IDENTIFIED. CONTROL WEEDS BY MOWING.
9. PERMANENT SEEDING – THE MAINTENANCE MEASURES ARE AS FOLLOWS: (9.1) IN GENERAL, A STAND OF VEGETATION CANNOT BE DETERMINED TO BE FULLY ESTABLISHED UNTIL IT HAS BEEN MAINTAINED FOR ONE FULL YEAR AFTER PLANNING; (9.2) NEW SEEDINGS SHALL BE SUPPLIED WITH ADEQUATE MOISTURE, SUPPLY WATER AS NEEDED, ESPECIALLY LATE IN THE SEASON, IN ORDER TO PREVENT EXCESSIVE BURNING OR DROUGHT STRESS; (9.3) AREAS WHICH FAIL TO ESTABLISH VEGETATION WILL BE RE-SEED AS SOON AS SUCH AREAS ARE IDENTIFIED. CONTROL WEEDS BY MOWING; (9.3.A) AREAS WHICH FAIL TO ESTABLISH VEGETATION WILL BE RE-SEED AS SOON AS SUCH AREAS ARE IDENTIFIED. CONTROL WEEDS BY MOWING; (9.3.B) IF STAND IS 60% DAMAGED, RE-ESTABLISH FOLLOWING SEEDING AND SEEDING RECOMMENDATIONS; (9.3.C) IF STAND HAS LESS THAN 50% VEGETATION, RE-ESTABLISH FOLLOWING SEEDING AND SEEDING RECOMMENDATIONS; (9.3.D) FERTILIZER THE SOIL MUST BE TESTED TO DETERMINE IF FERTILITY OR NUTRIENT BALANCES ARE RESPONSIBLE. RE-ESTABLISH THE STAND FOLLOWING SEEDING AND SEEDING RECOMMENDATIONS.
10. MULCHING – ALL MULCHES AND SOIL COVERINGS SHOULD BE INSPECTED PERIODICALLY THROUGHOUT THE YEAR TO DETERMINE IF MULCH IS MAINTAINING COVERAGE OF THE SOIL SURFACE. REPAIR AS NEEDED.
11. SOIL STABILIZATION BLANKETS & MATTING – ALL SOIL STABILIZATION BLANKETS AND MATTING SHOULD BE INSPECTED PERIODICALLY FOLLOWING INSTALLATION. PARTICULARLY AFTER RAINSTORMS TO CHECK FOR EROSION AND UNDERMINING. ANY DISLOCATION OR FAILURE SHOULD BE REPAIRED IMMEDIATELY. IF WASHOUTS OR BREAKAGE OCCURS, REINSTALL THE MATERIAL AFTER REPAIRING DAMAGE TO THE SLOPE OR DITCH. CONTINUE TO MONITOR THESE AREAS UNTIL WHICH TIME THEY ARE PERMANENTLY STABILIZED, AT THAT TIME AN ANNUAL INSPECTIONS SHOULD BE ADEQUATE.
12. STREET CLEANING / SWEEPING – THE MAINTENANCE MEASURES ARE AS FOLLOWS: (12.1) EVALUATE ACCESS POINTS DAILY FOR SEDIMENT TRACKING; (12.2) WHEN TRACKED OR SPILLED SEDIMENT IS OBSERVED, STREET CLEANING SHOULD BE DONE SEVERAL TIMES THROUGHOUT THE TRACK-OUT, SUCH AS DURING RAIN. CLEANING MAY NOT BE MIXED WITH THE SEDIMENT, AND (12.4) IF SEDIMENT IS MIXED WITH OTHER POLLUTANTS, IT WILL BE DISPOSED OF PROPERLY AT AN AUTHORIZED LANDFILL.

STANDARD DETAILS

NUMBER	NAME	LOCATION
9.5.74	CONSTRUCTION ENTRANCE	OMAHA REGIONAL STORMWATER DESIGN MANUAL
9.5.75	SILT FENCE	OMAHA REGIONAL STORMWATER DESIGN MANUAL
9.5.77	STORM DRAIN INLET PROTECTION	OMAHA REGIONAL STORMWATER DESIGN MANUAL
9.5.78	TEMPORARY DIVERSION DIKE	OMAHA REGIONAL STORMWATER DESIGN MANUAL
9.5.84	TEMPORARY SEDIMENT TRAP	OMAHA REGIONAL STORMWATER DESIGN MANUAL
9.5.15	TEMPORARY SEDIMENT BASIN	OMAHA REGIONAL STORMWATER DESIGN MANUAL
9.5.16	DUST CONTROL	OMAHA REGIONAL STORMWATER DESIGN MANUAL
9.5.19	TEMPORARY SEEDING	OMAHA REGIONAL STORMWATER DESIGN MANUAL
9.5.20	TEMPORARY SEEDING	OMAHA REGIONAL STORMWATER DESIGN MANUAL
9.5.22	MULCHING	OMAHA REGIONAL STORMWATER DESIGN MANUAL
9.5.23	SOIL STABILIZATION BLANKETS AND MATTING	OMAHA REGIONAL STORMWATER DESIGN MANUAL
9.6.2	SOLID WASTE MANAGEMENT	OMAHA REGIONAL STORMWATER DESIGN MANUAL
9.6.4	MATERIAL DELIVERY AND STORAGE	OMAHA REGIONAL STORMWATER DESIGN MANUAL
9.6.5	VEHICLE AND EQUIPMENT FUELING	OMAHA REGIONAL STORMWATER DESIGN MANUAL
9.6.7	SWPPP NOTIFICATION SIGN	OMAHA REGIONAL STORMWATER DESIGN MANUAL

THE OMAHA REGIONAL STORMWATER DESIGN MANUAL CAN BE FOUND AT

<http://www.omahastormwater.org>



VICINITY MAP

DESIGN TEAM	NO.	BY	DATE	REVISIONS
DRAWN BY: RWH				
DESIGNED BY: CO				
CHECKED BY: RBW				

I HEREBY CERTIFY THAT THIS PLAN WAS PREPARED BY ME OR UNDER MY DIRECT SUPERVISION AND THAT I AM A LICENSED PROFESSIONAL ENGINEER UNDER THE LAWS OF THE STATE OF NEBRASKA.

 RANDY B. JENKINS, P.E.
 Lic. No. E-15944
 Date 10/29/2017

BRIDGEPORT DEVELOPMENT
 SAPPY COUNTY,
 NEBRASKA

SEH
 PHONE: 320.228.4300
 2000 25TH AVENUE SOUTH
 ST. CLOUD, MN 56302-1717
www.sehinc.com

SWPP PLAN

FILE NO.
 GRAD137810

17
 18